



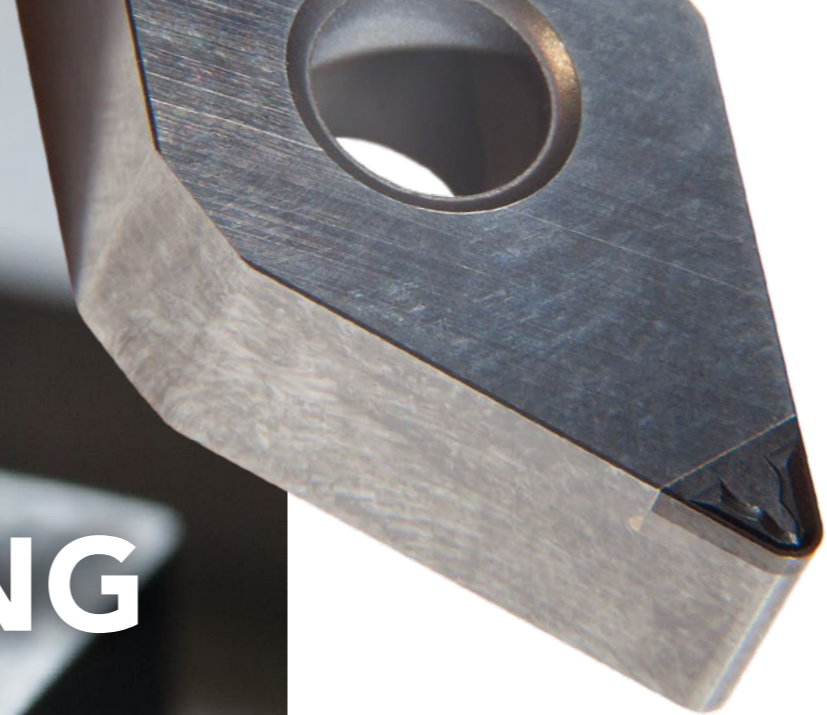
LASER MACHINING

FOR THE CUTTING TOOL INDUSTRY

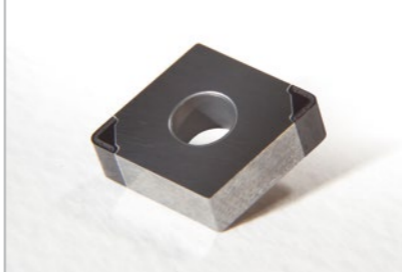
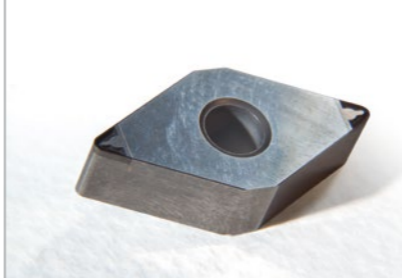
EDM

LASER MACHINING

WITH HIGHEST PRECISION IN
SUPERHARD MATERIALS



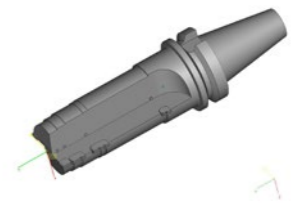
CHIPBREAKERS



DIMPLE LOCKS



CUSTOM MADE TOOLS

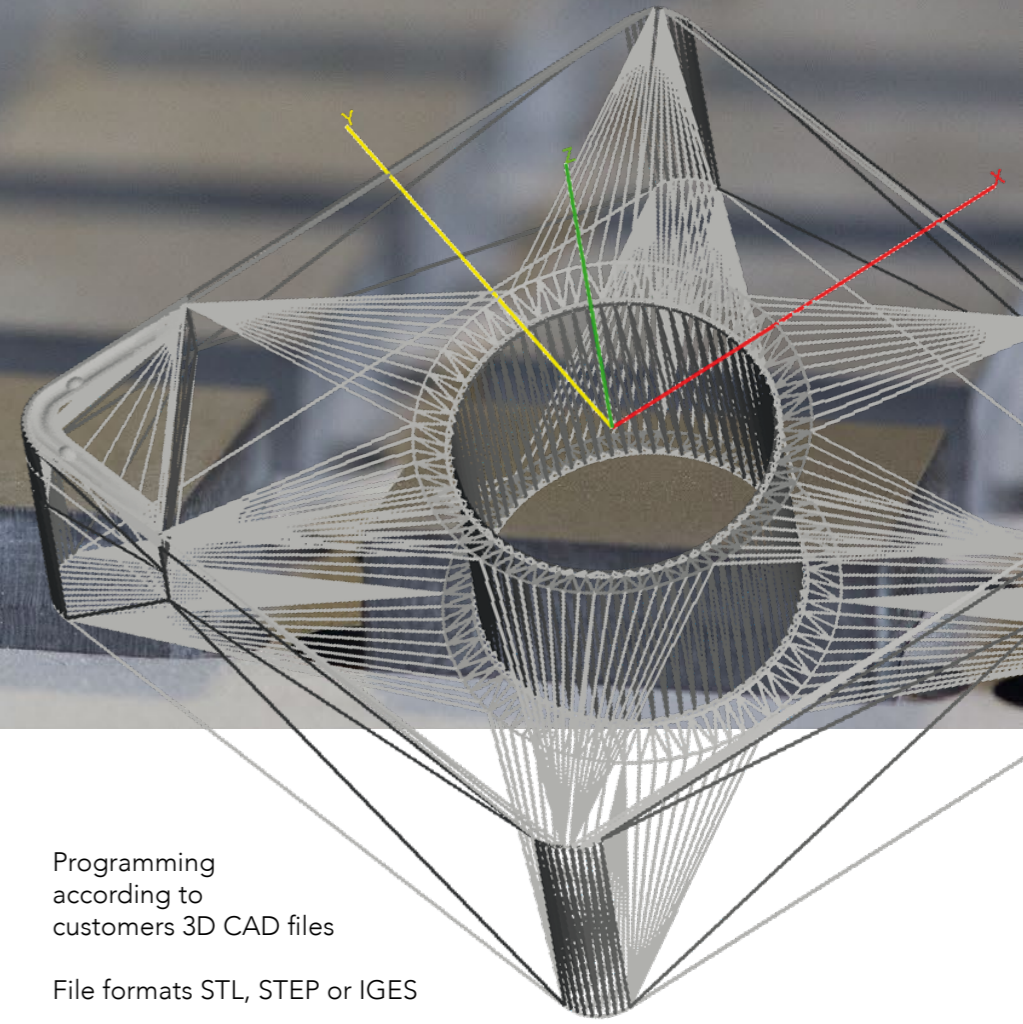


PROCESSABLE MATERIAL EXAMPLES

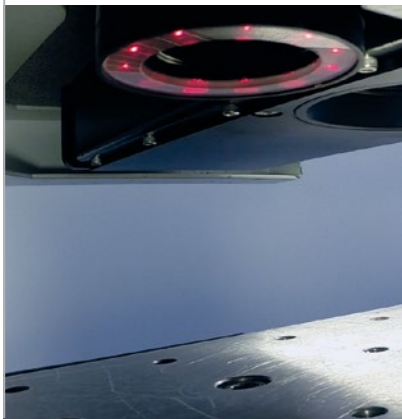
CBN
PCD
PCBN
CERAMICS
TUNGSTEN CARBIDE



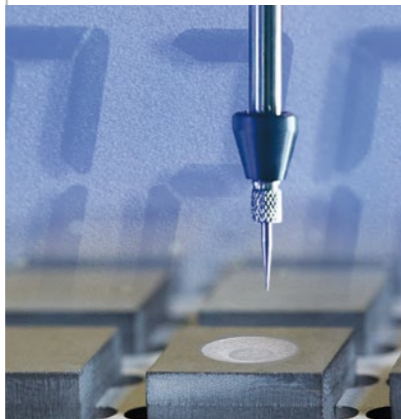
LASER SERIAL PRODUCTION OF CUTTING TOOLS



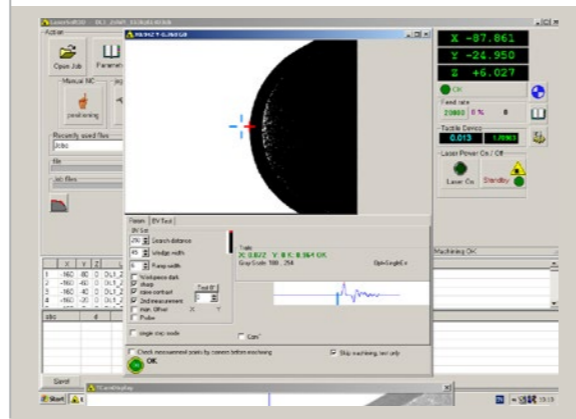
Videocamera for
positioning of workpiece



Depth control
during machining



Automatic fine adjustment of geometry
by machine vision during serial production



Fixtures used for serial production
of cutting inserts



Programming
according to
customers 3D CAD files

File formats STL, STEP or IGES



Oy Suomen EDM Ab, founded in 1980 and located in Porvoo Finland, provides a wide variety of products and services for the toolmaking industry.

With our top modern machinery we are providing advanced machining services according to customers files and drawings.

The comprehensive machinery in our production is particularly well suited for the machining of very hard materials.



www.suomenedm.fi



Oy Suomen EDM Ab

Yrittäjänkatu 20 | FI-06150 Porvoo | Finland

Tel. +358 19 5211 400 | Fax +358 19 669 765

info@suomenedm.fi | www.suomenedm.fi